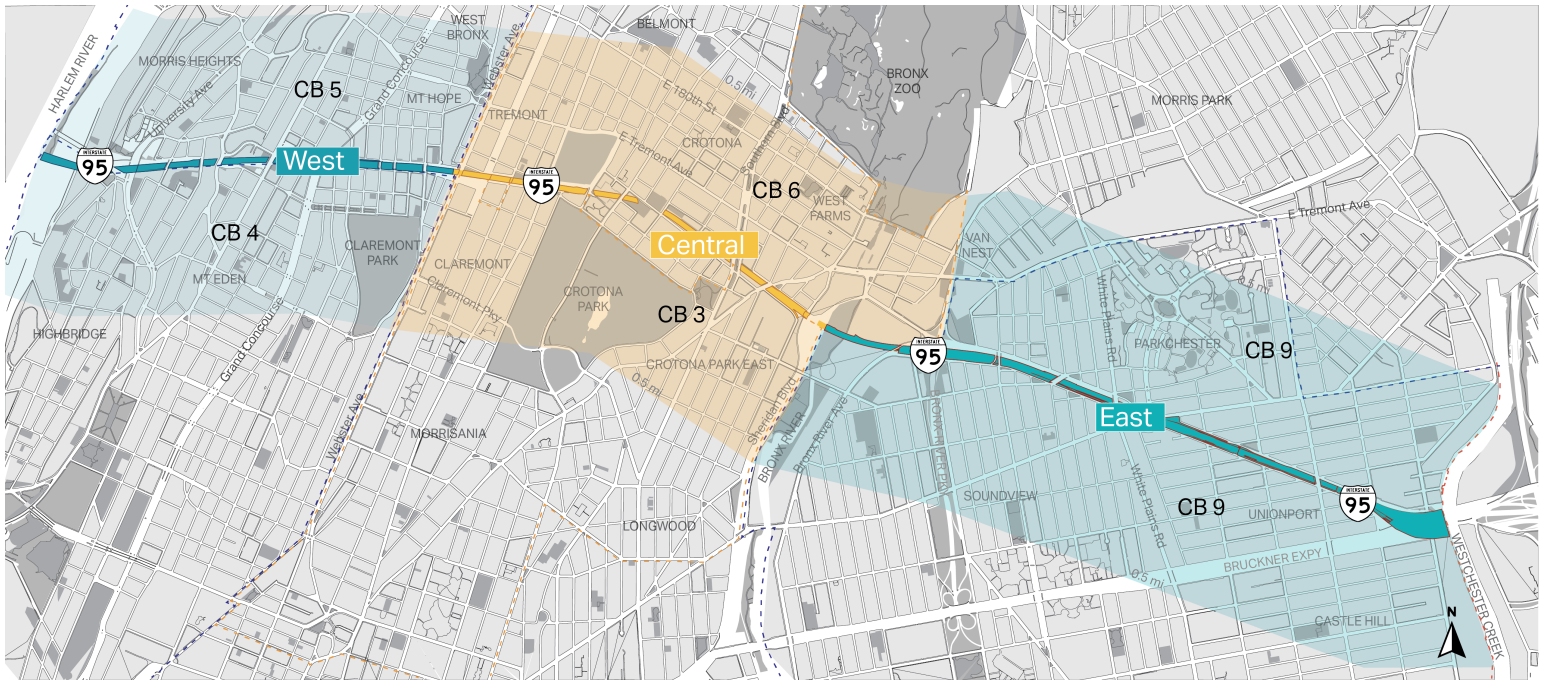


# Reimagine the Cross Bronx: Identified Issues

A synthesis of research, data analysis, and community outreach

June 2024





Map of the Study Area

Reimagine the Cross Bronx is a multi-agency transportation and planning study. This study is a partnership among the New York City Departments of Transportation, City Planning, Health and Mental Hygiene, and the New York State Department of Transportation. Together these agencies are the Study Team, and they launched the study in December of 2022. The Study Area includes a half mile north and south of the Cross Bronx. It spans 4.5 miles from the Harlem River to Westchester Creek as shown above.

Throughout 2023, the Study Team heard from over 900 individuals about their experiences. People who live, work, and travel around the Cross Bronx shared valuable insights and concerns about the area. During the same period, the Study Team researched and analyzed existing physical and social conditions.

*The Engagement Summary Report: Issue Identification* summarizes the feedback received

during 2023 outreach. The *Existing Conditions Summary Report* compiles all Study Area research and data analysis. The *Identified Issues Synthesis* combines findings from the two reports.

These findings will guide upcoming phases of the study. Many of the identified issues stem from years of inequitable conditions and practices. While a two-year transportation and planning study cannot address every issue, the Study Team will help communities reimagine the Cross Bronx through actionable next steps. Some of these may lead to project concepts. Others may involve documenting issues for further research and consideration.

**Our Community Working Group, Community Partners, and countless others contributed to the 'Issue Identification' process. The Study Team is excited to highlight this work and bring the results back to the community.**

# Reimagine the Cross Bronx: Identified Issues

A synthesis of research, data analysis, and community outreach



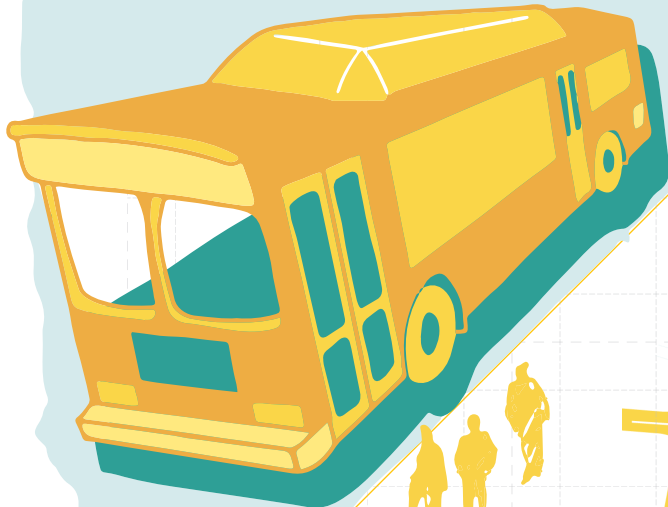
**Reimagine**  
the Cross Bronx



# Connected Communities

## Public Transit

Public transportation availability varies throughout the corridor. The west and central sections of the Study Area have more transit access than the east. Many struggle with limited choices for moving around their neighborhoods or getting to other parts of the city.



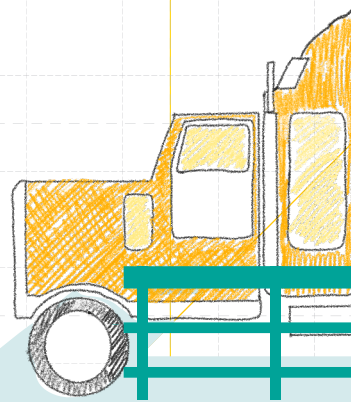
Since all subway lines are oriented north-south, only buses serve east-west trips.

### On East-West Study Area Routes:

Buses Experience  
**3X** Higher  
Ridership

...and approximately  
**25%** Slower  
Speeds

\*Compared to City Wide Averages<sup>1</sup>



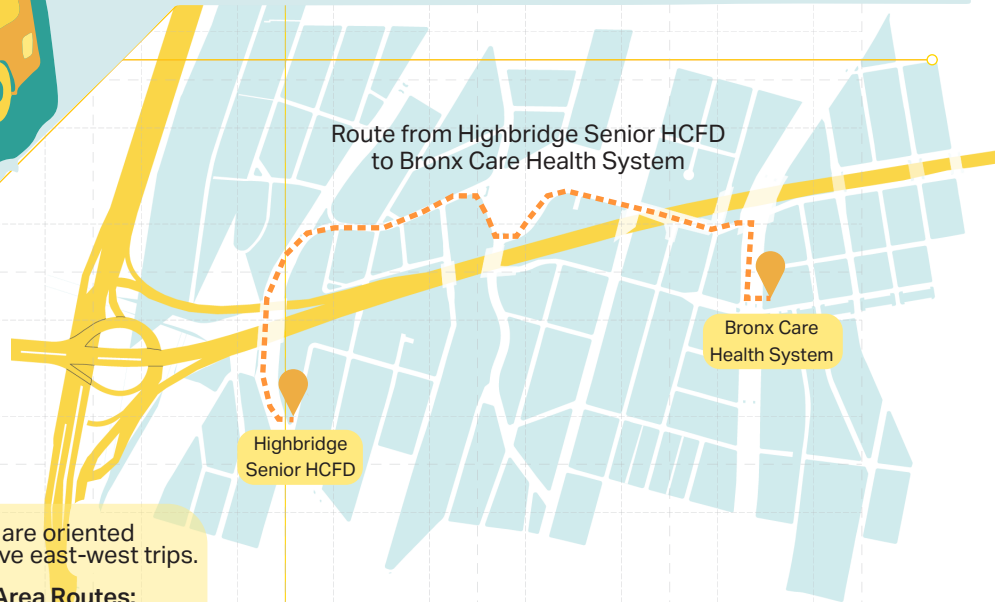
## Freight Management

Freight vehicles are essential for economic vitality and the distribution of goods across the Bronx, city, and region. However, they also contribute to traffic congestion, noise pollution, and poor air quality.

Freight movement accounts for 1 in 5 vehicles on the Cross Bronx



## Route from Highbridge Senior HCFD to Bronx Care Health System



Highbridge Senior HCFD

Bronx Care Health System

## Mobility Gaps

The Study Area has disconnected east-west roads and limited north-south connections. Frequent highway ramps along with inconsistent pedestrian and bicycle infrastructure further limit mobility.

# Healthy Communities

## Open Space

Only half of all residents live in walking distance (up to 1/2 mile) of parks that are 6 acres or larger, greenways, recreation centers, or parks with pools<sup>6</sup>.

Open spaces create opportunities for play and exercise. They provide a respite from urban heat, decrease flooding risks, and create habitat for local wildlife. Most Study Area residents have access to small open spaces like playgrounds or seating areas.

## Health Disparities

Residents of the Study Area experience disproportionately high rates of poor health compared to the rest of the city.

Child ER visits for Asthma due to Air Pollution <b>4X</b> more likely	Child ER visits for Asthma due to any cause <b>2X</b> more likely	Adult ER visits for Asthma due to any cause <sup>2</sup> <b>4X</b> more likely
---	---	--

Adults are more likely to experience:

Diabetes <b>2X</b> more likely	Obesity <b>2X</b> more likely <sup>3</sup>	Not Receiving Medical Care <b>4X</b> more likely
--------------------------------------	--	--

## Noise Pollution

Traffic noise from roadways can cause: irritation and annoyance, sleep disturbances, stress, cardiovascular disease, risk of stroke, diabetes, hypertension, and loss of hearing<sup>4</sup>.

## Air Pollution

Sites near the Cross Bronx have shown improved air quality since measurements began in 2009<sup>5</sup>. However, current pollution levels still pose health risks. Air quality is a central concern for many community members living around the Cross Bronx.

# Safe Communities

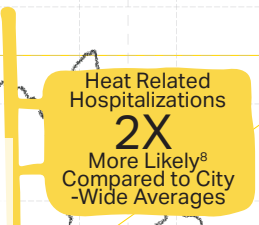


Some Locations Are  
**2°-7°**  
Hotter Than the  
City-Wide  
Average<sup>7</sup>

## Climate Hazards

Climate change concerns like extreme heat disproportionately affect those living in the Study Area. This is due to historical and current environmental and socioeconomic inequities. On average the Study Area is hotter than the rest of NYC.

Climate change causes sea-level rise and more frequent extreme weather events. Both of these factors will increase the intensity and prevalence of rainfall-based flooding.<sup>9</sup>



Heat Related  
Hospitalizations  
**2X**  
More Likely<sup>8</sup>  
Compared to City  
-Wide Averages

## Intersection and Corridor Safety Concerns

There are five Vision Zero priority intersections and thirteen Vision Zero priority corridors<sup>10</sup> within the Study Area. NYC Department of Transportation prioritizes these locations for interventions that increase roadway safety, however certain intersections and roads experience many crashes that cause severe pedestrian injuries<sup>11</sup>.

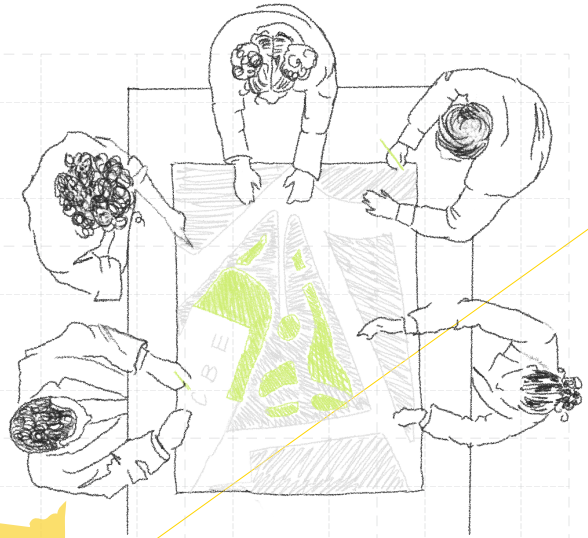
# Strong Communities

## History & Culture

Communities around the Cross Bronx express pride in their history of advocacy and creativity. They are concerned about changes that could contribute to the loss of these legacies.

## Governance Coordination & Community Input

Many government agencies lead projects on or around the Cross Bronx. Community members wish to see these efforts coordinated. They also would like ongoing opportunities to weigh in on transformations of the corridor.



## Community Planning

Residents of neighborhoods surrounding the Cross Bronx corridor are overburdened and underserved. This is due to many intersecting inequalities, and the presence of the highway is just one of these inequalities. Residents can face increased barriers to accessing resources such as jobs and stable and healthy housing.

Median Income:  
**\$38,694**  
Around Half of  
City-Wide Median<sup>12</sup>

Unemployment Rate:  
**13.4%**  
Almost Double  
City-Wide Rates<sup>13</sup>



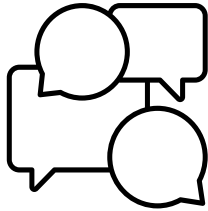


# Study Schedule



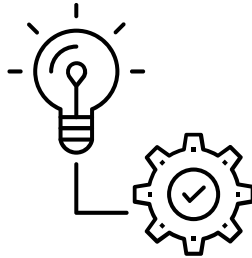
## Community Planning Begins

Spring to Summer  
2023



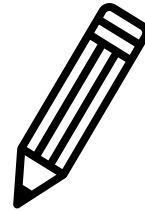
## Issue Identification

Spring to Fall  
2023



## Concept Development

Spring to Summer  
2024



## Concept Refinement

Fall  
2024



## Vision Release

Winter  
2024

## Next Steps

In Summer 2024 the Study Team will propose initial concepts that respond to these Identified Issues. During 'Concept Development' outreach, participants will comment on the initial concepts and share their priorities. The Study Team will respond to this feedback and bring refined concepts back to the community. After a round of 'Concept Refinement' engagement, the Study Team will develop a set of finalized concepts in the Vision Release.

There will be numerous opportunities to provide both in-person and virtual feedback on Reimagine the Cross Bronx concepts throughout the rest of the study.

Find all resources and information about events on the study website: [nyc.gov/CrossBronx](https://www.nyc.gov/CrossBronx)

Contact the Study Team by emailing:  
[CrossBronx@dot.nyc.gov](mailto:CrossBronx@dot.nyc.gov)

Sign up for our newsletter:  
<https://www.crossbronx.info/contact-us>

## Footnotes

<sup>1</sup> NYC Transit Operations Planning, 2023

<sup>2</sup> NYC Department of Health and Mental Hygiene Environment and Health Data Portal

<sup>3</sup> NYC Department of Health and Mental Hygiene Community Health Profile

<sup>4</sup> Münzel T, Sørensen M, Schmidt F, Schmidt E, Steven S, Kröller-Schön S, Daiber A. The Adverse Effects of Environmental Noise Exposure on Oxidative Stress and Cardiovascular Risk. *Antioxid Redox Signal*. 2018 Mar 20;28(9):873-908. doi: 10.1089/ars.2017.7118. PMID: 29350061; PMCID: PMC5898791.

<sup>5</sup> NYC Department of Health and Mental Hygiene New York City Community Air Survey Report: 2008-2021

<sup>6</sup> NYC OpenData, Walk-to-a-Park Service Area, 2023

<sup>7</sup> NYC Heat Map (Surface Temperature), New York City Council Data Team, 2022

<sup>8</sup> NYC Department of Health and Mental Hygiene Environment and Health Data Portal

<sup>9</sup> NYC Stormwater Flood Maps, NYC Department of Environmental Protection, 2022

<sup>10</sup> NYC Department of Transportation Vision Zero Data, 2023  
CHARACTERISTICS." American Community Survey, ACS 5-Year Estimates Data Profiles, Table DP03, 2021, [https://data.census.gov/table/ACSDP5Y2021.DP03?q=employment&g=050XX00US36005\\$1400000](https://data.census.gov/table/ACSDP5Y2021.DP03?q=employment&g=050XX00US36005$1400000).

<sup>11</sup> NYC Department of Transportation Crash Data, 2017-2022

<sup>12</sup> U.S. Census Bureau. "SELECTED ECONOMIC CHARACTERISTICS." American Community Survey, ACS 5-Year Estimates Data Profiles, Table DP03, 2021, [https://data.census.gov/table/ACSDP5Y2021.DP03?q=employment&g=050XX00US36005\\$1400000](https://data.census.gov/table/ACSDP5Y2021.DP03?q=employment&g=050XX00US36005$1400000).

<sup>13</sup> U.S. Census Bureau. "SELECTED ECONOMIC CHARACTERISTICS." American Community Survey, ACS 5-Year Estimates Data Profiles, Table DP03, 2021, [https://data.census.gov/table/ACSDP5Y2021.DP03?q=employment&g=050XX00US36005\\$1400000](https://data.census.gov/table/ACSDP5Y2021.DP03?q=employment&g=050XX00US36005$1400000).





Visit us at [nyc.gov/CrossBronx](https://nyc.gov/CrossBronx) for the complete Existing Conditions Engagement Summary and Engagement Summary Report: Issue Identification!



June 2024